

Anti- H_MS4A1(CD20) hIgG1 Antibody(Ocrelizumab)

Product Information

GM-27200AB-10	10 µg
GM-27200AB-100	100 µg
GM-27200AB-1000	1 mg

Antibody Information

Species Reactivity	Human
Clone	Ocrelizumab
Source/Isotype	Monoclonal human IgG1, κ
Application	Flow cytometry
Specificity	Detects CD20
Gene	MS4A1
Other Names	B1, Bp35, CVID5, FMC7, LEU-16, S7
Gene ID	931
Background	<p>B-lymphocyte antigen CD20 or CD20 is expressed on the surface of all B-cells beginning at the pro-B phase (CD45R+, CD117+) and progressively increasing in concentration until maturity. In humans CD20 is encoded by the MS4A1 gene. This gene encodes a member of the membrane-spanning 4A gene family. Members of this nascent protein family are characterized by common structural features and similar intron/exon splice boundaries and display unique expression patterns among hematopoietic cells and nonlymphoid tissues. This gene encodes a B-lymphocyte surface molecule that plays a role in the development and differentiation of B-cells into plasma cells. Immunohistochemistry can be used to determine the presence of CD20 on cells in histological tissue sections. Because CD20 remains present on the cells of most B-cell neoplasms, and is absent on otherwise similar appearing T-cell neoplasms, it can be very useful in diagnosing conditions such as B-cell lymphomas and leukaemias. However, the presence or absence of CD20 in such tumours is not relevant to prognosis, with the progression of the disease being much the same in either case. CD20 positive cells are also sometimes found in cases of Hodgkins disease, myeloma, and thymoma.</p>
Storage	Store at 2-8°C short term (1-2 weeks). Store at ≤ -20°C long term. Avoid repeated freeze-thaw.
Formulation	Phosphate-buffered solution, pH 7.2.
Endotoxin	< 1 EU/mg, determined by LAL gel clotting assay

Version:3.1 Revision Date:12/25/2023

Data Examples

Flow cytometry

The recommended usage range is 0.5-4 μg per test. H_CD20 CHO-K1 Cell Line (Catalog # GM-C09616) was stained with Anti-H_MS4A1(CD20) hlgG1 Antibody(Ocrelizumab) (Catalog # GM-27200AB) or isotype control antibody, followed by anti-Human IgG APC-conjugated Secondary Antibody.

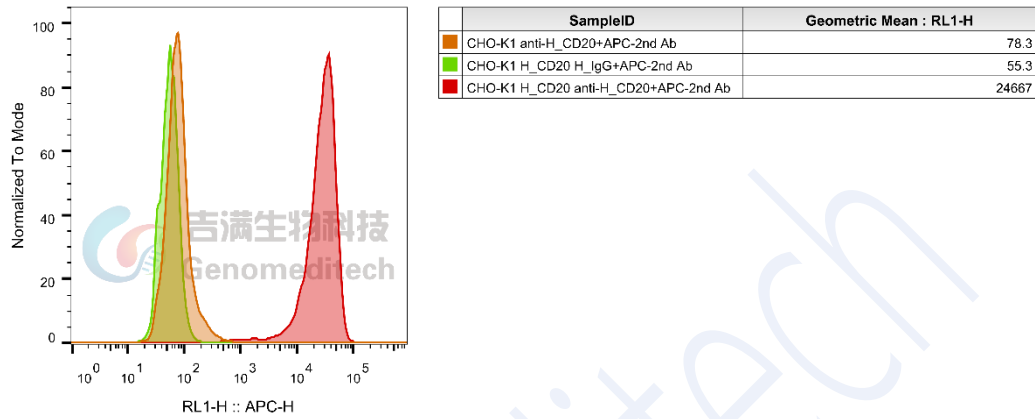


Fig 1. FACS